

Stick type abrasive point

Ceramic Fiber Point Nano

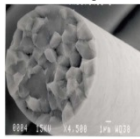
More grinding than now.



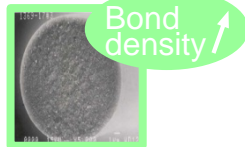
01

Abt 1.6 times* higher cutting capacity

Extended image of fiber



Bonded in micron-level



Bonded in nano-level

Due to nano-level bonding of alumina fiber grindstone, cutting capacity was improved.

* comparing with our ceramic fiber point.

02

Improvement of durability and strength

Bending strength : 1300MPa*

900MPa

45% ↑

Durability:

Due to nano-level bonding of alumina fiber grindstone.

Strength intensity:

break-proof base material has strong bending strength.

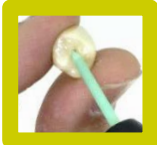
* It is an approximate figure of our company investigation.

03

More materials can be shaved.

Usable material (Lithium disilicate, porcelain, hybrid resin, CAD/CAM produced crown, metals)

Because of improvement of cutting efficiency, strength and durability, it can be used not only porcelain but also Lithium disilicate and metals



Intended use

(Adjustment of occlusal surface, Fitting of Inlay, Inner adjustment of crown or clasp.)



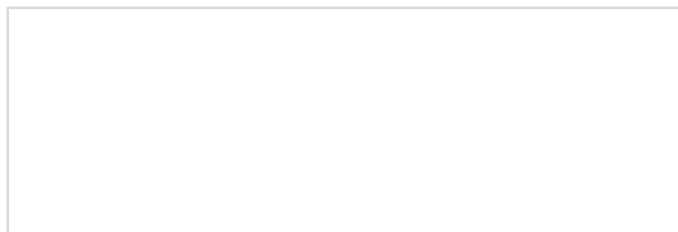
Stick type abrasive point
Ceramic Fiber Point Nano

Form : 1 form Nano C = Coarse(Green)
Nano M = Medium(Violet)
Nano F = Fine(White)

Packaging and price (excluding tax):
 > Nano C 3pcs/case = JPY 6,900
 > Nano M 3pcs/case = JPY 6,900
 > Nano F 3pcs/case = JPY 6,900
 > Nano Start set = JPY 4,900
 (C & M each 1 piese)
 > Nano Assortment = JPY 6,900
 (C & M & F each 1 piese)

Before using, read the product inserts for sure.

*Color of the products might be changed. *The above price does not include taxes.
*The above price is based on the current cost / market level (in Feb 2018) and subject to change.



Production sales agency



株式会社マシンツール中央
MACHINE TOOL CHUO
HYOGO JAPAN

7 - 5 Tsuto-Otsuka Nishinomiya
663-8241 Hyogo, JAPAN
Tel: +81-798-37-0270 Fax: +81-798-37-0230
www.mt-chuo.jp